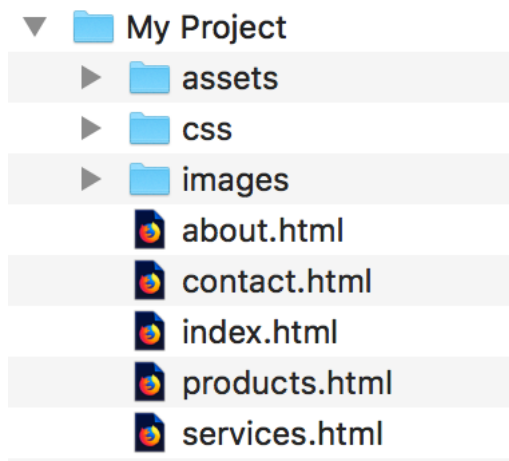


# Lesson 1: Working with the Dreamweaver Interface

---

## Basic Project Folder Structure:

Many of the projects we work with during the semester will follow a common folder structure. See below for example.



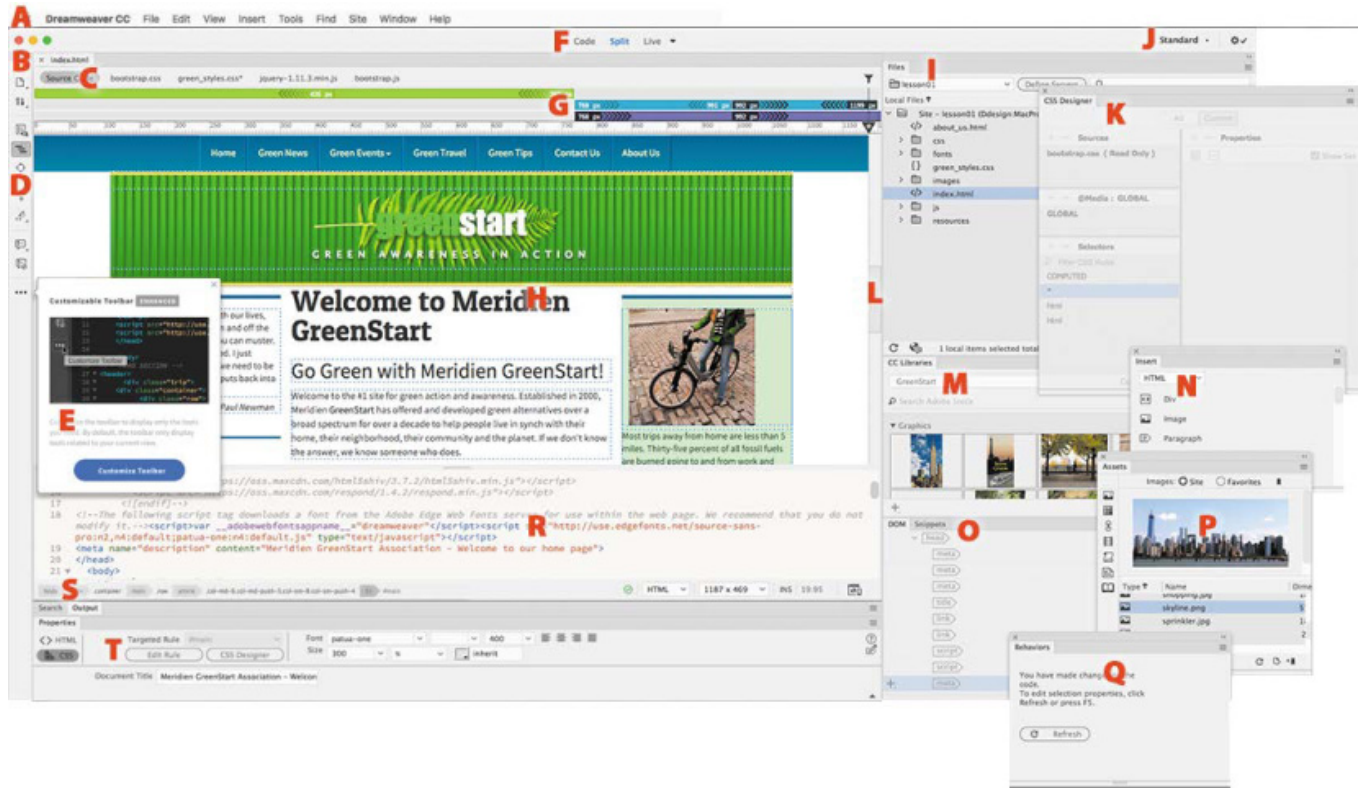
**Assets** – Holds working multimedia files, word docs with copy, etc...

**CSS** – Holds CSS files associated with the project

**Images** – Holds all image files referenced from your HTML pages

**HTML Files** – all HTML files should be at the root level of the project folder

# The Dreamweaver Interface:



- A. Menu bar
- B. Document tab
- C. Related files interface
- D. Coding toolbar
- E. New Features
- F. Document toolbar
- G. Visual Media Query (VMQ) interface
- H. Live/Design views
- I. Files panel
- J. Workspace menu
- K. CSS Designer
- L. Scrubber
- M. CC Libraries panel
- N. Insert panel
- O. DOM panel
- P. Assets panel
- Q. Behaviors panel
- R. Code view
- S. Tag selectors
- T. Property inspector

## **Changing Your Interface Preferences:**

- Windows: Edit > Preferences
- Mac: Dreamweaver CC > Preferences
- Preferences Dialog will appear
- Select Interface Category
- App Theme – choose color
- Code Theme – Select code theme

## **Working with Toolbars:**

### **Show the Document Toolbar:**

- Go to Windows in the Menu Bar
- Select Toolbars > Document

### **Show the Standard Toolbar:**

- Go to Windows in the Menu Bar
- Select Toolbars > Standard

## **Working with Files:**

### **Creating new files:**

- Go to File > New Document
- The New Document Dialog box will appear
- Select the document you wish to create

### **Saving Files:**

- Save changes to existing Files: File > Save
- Save a new file or save an existing file as a new file: File > Save As

### **Changing Your Views:**

- Click code to see only code
- Click Split to see Code/Design
- Click Design/Live to see WYSIWIG full screen

### **Modifying Split View Windows:**

- Go to View in the Menu Bar
- Select Split > Split Vertically (shows code on left/design on right)

### **Live Source Code:**

Live Source code will show you the rendered code as it would appear in a browser

- Place document into Live View
- Click the live source code button at the top left of the document tab
- window.

### **Working with Panels:**

- Go to Windows in Menu Bar
- Select Panels you would like to work with:
  - Files, Insert, CSS Designer, DOM, Properties